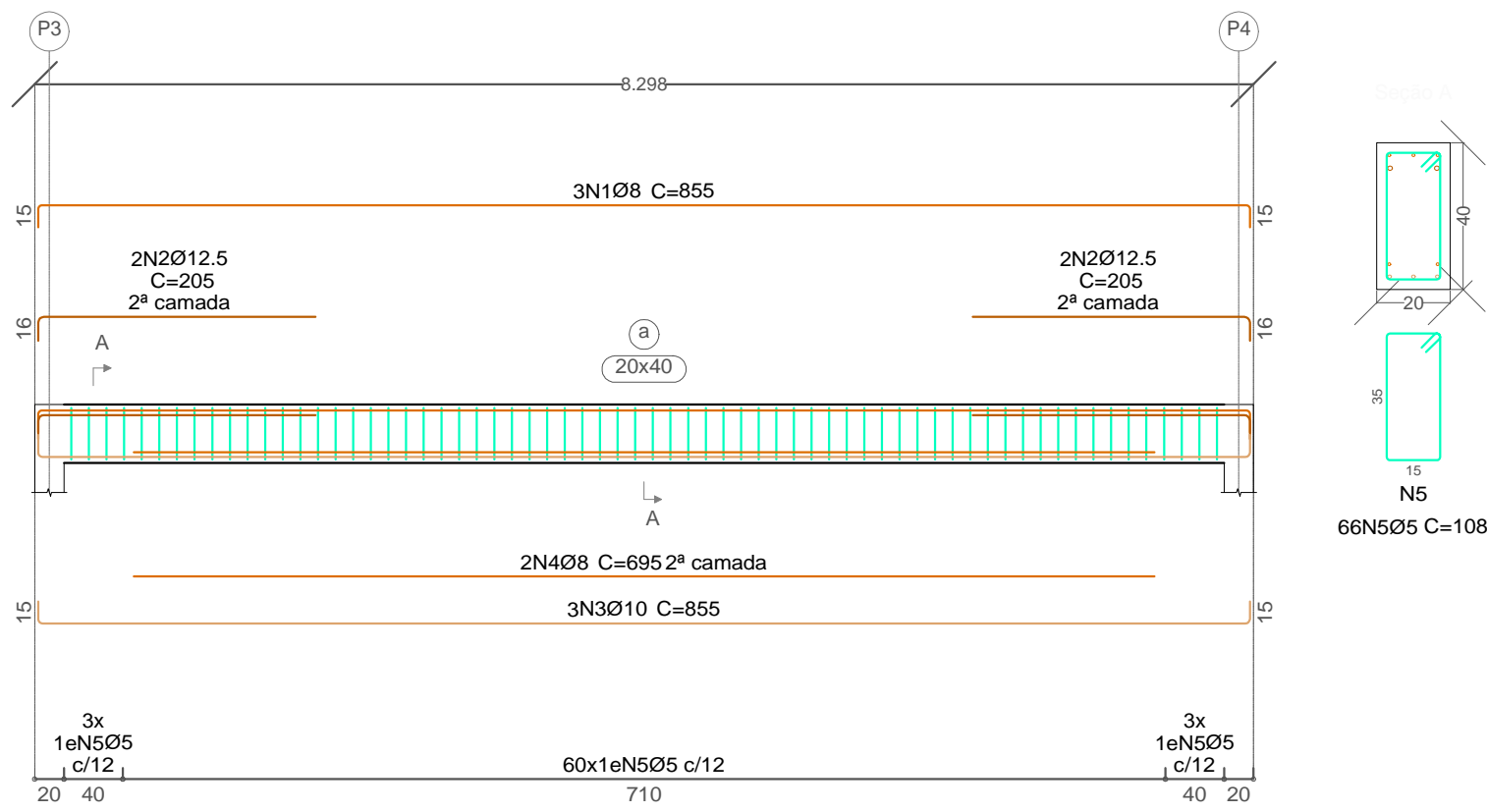
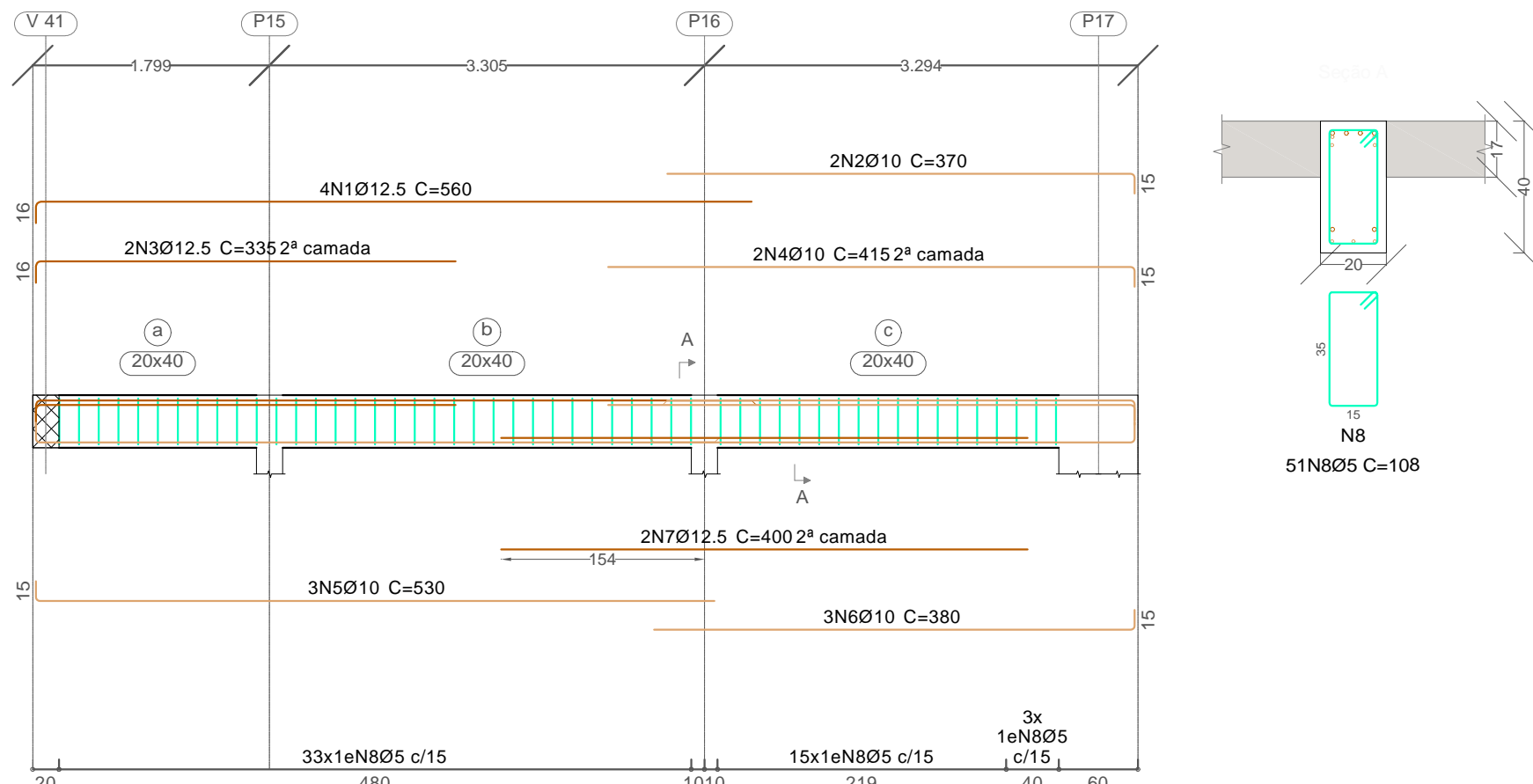


VIGAS COBERTURA 1

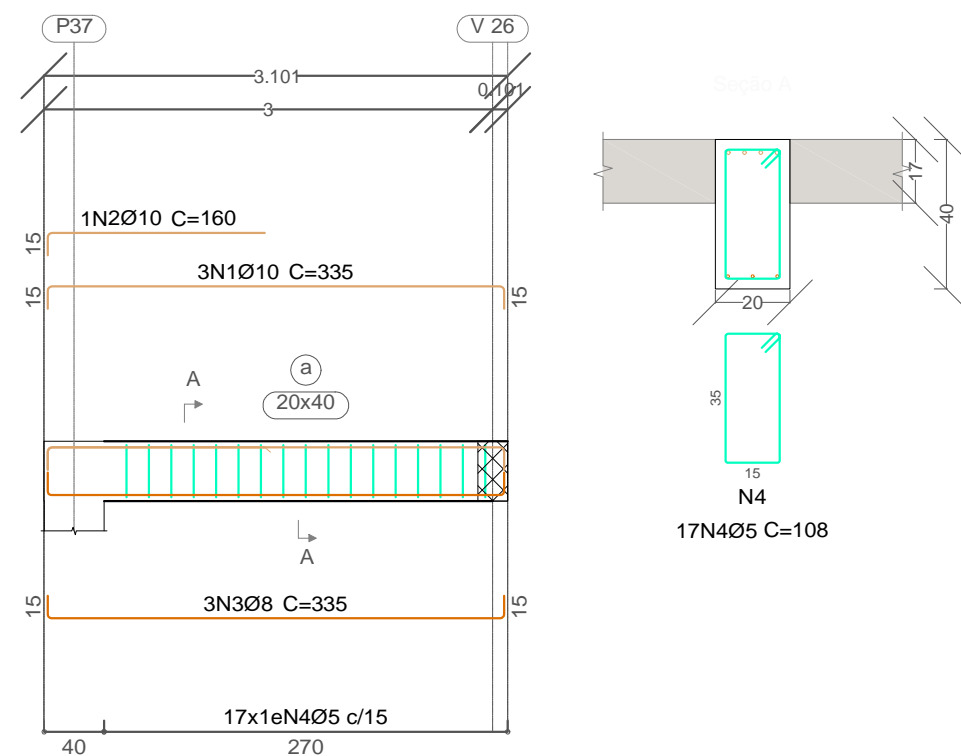
V 1
Escala vigas 1:50
Escala seções 1:20



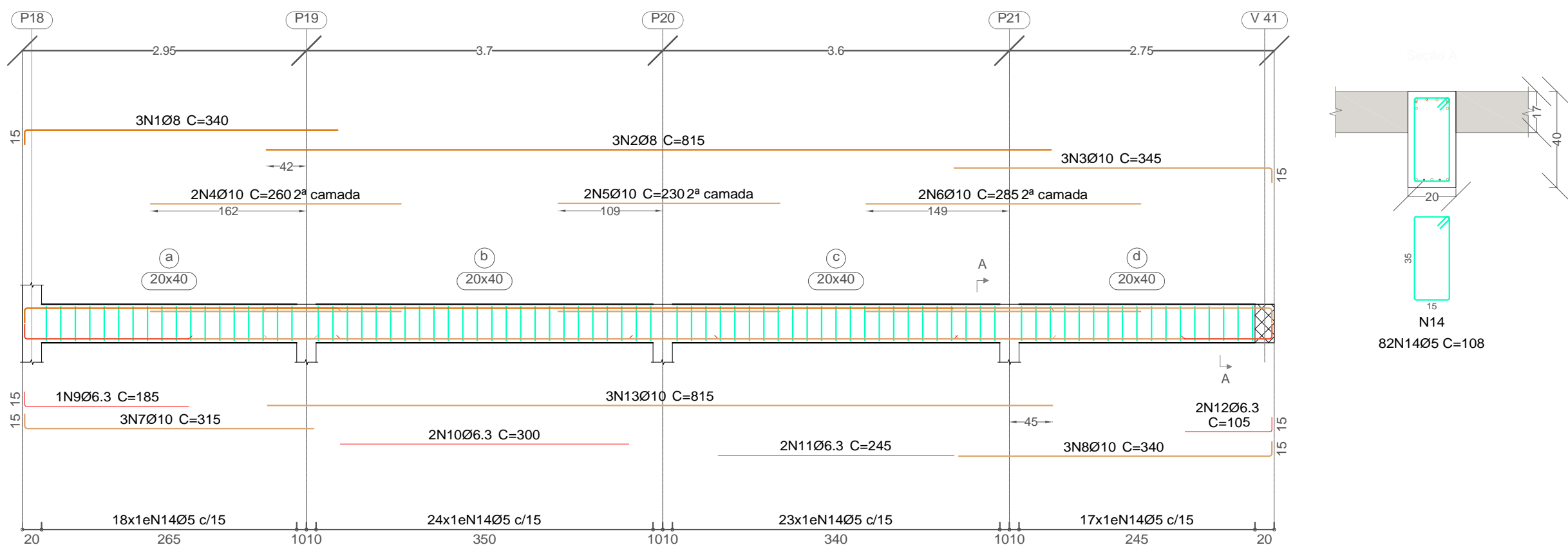
V 4
Escala vigas 1:50
Escala seções 1:20



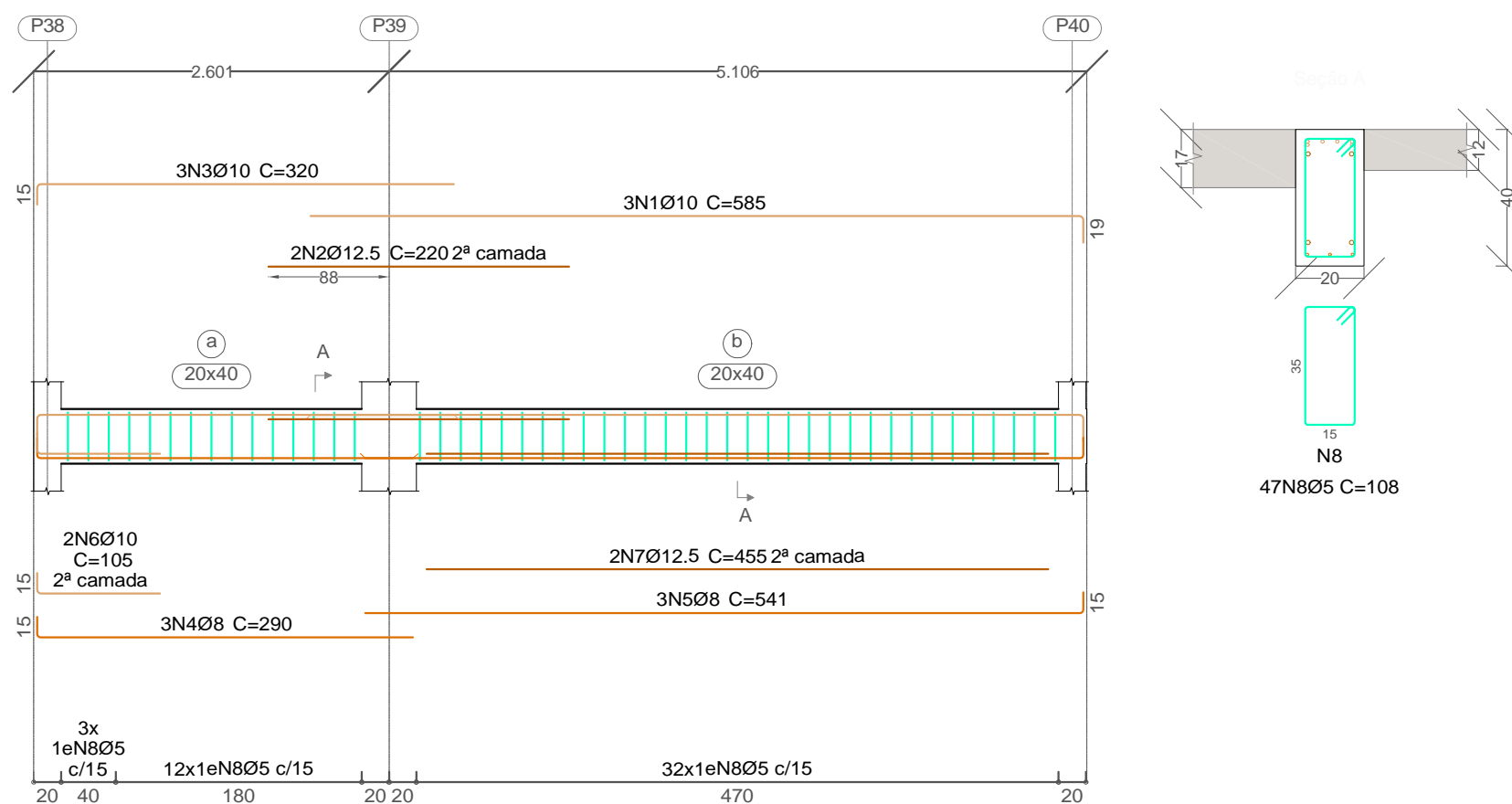
V 7
Escala vigas 1:50
Escala seções 1:20



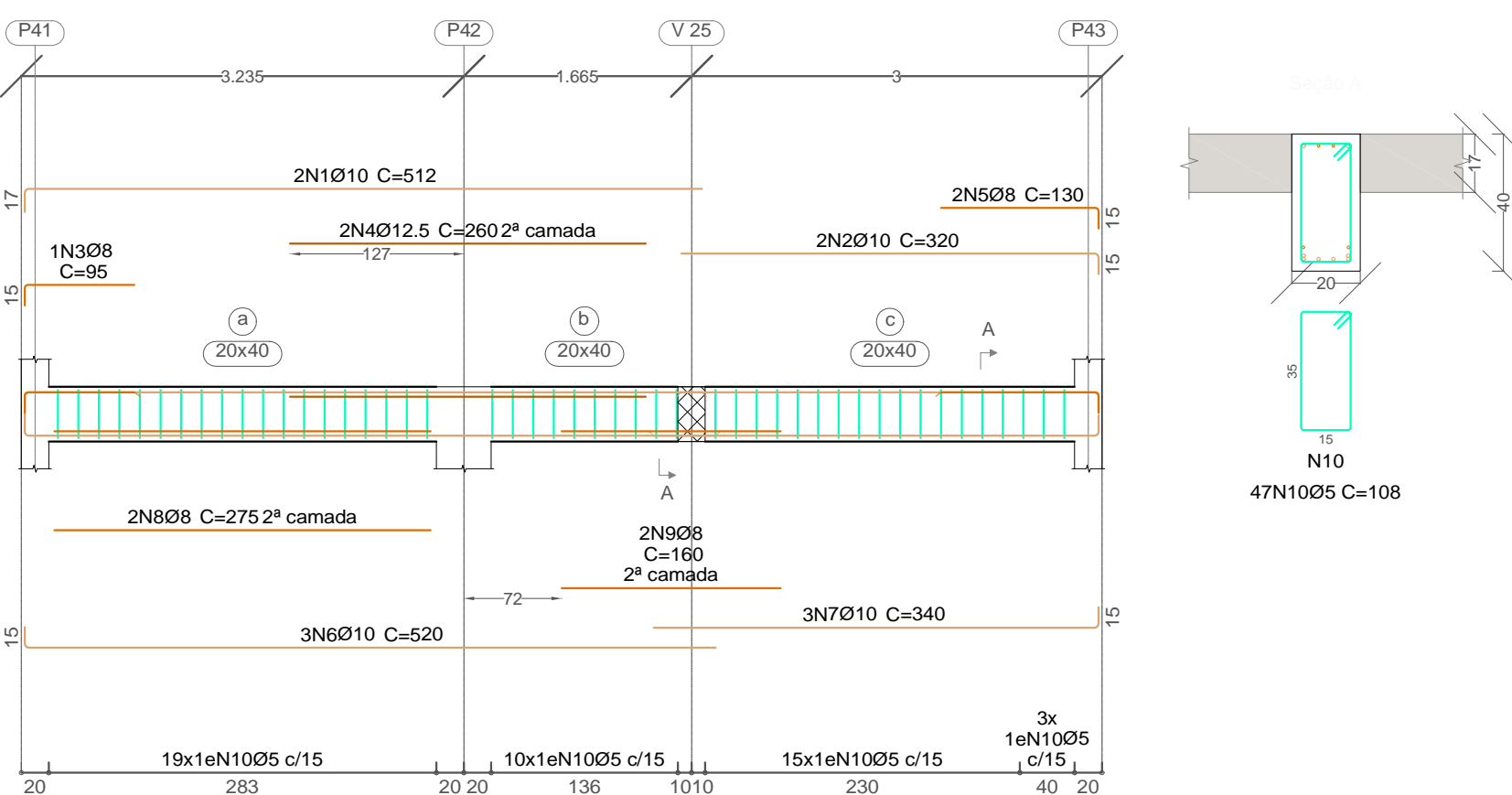
V 5
Escala vigas 1:50
Escala seções 1:20



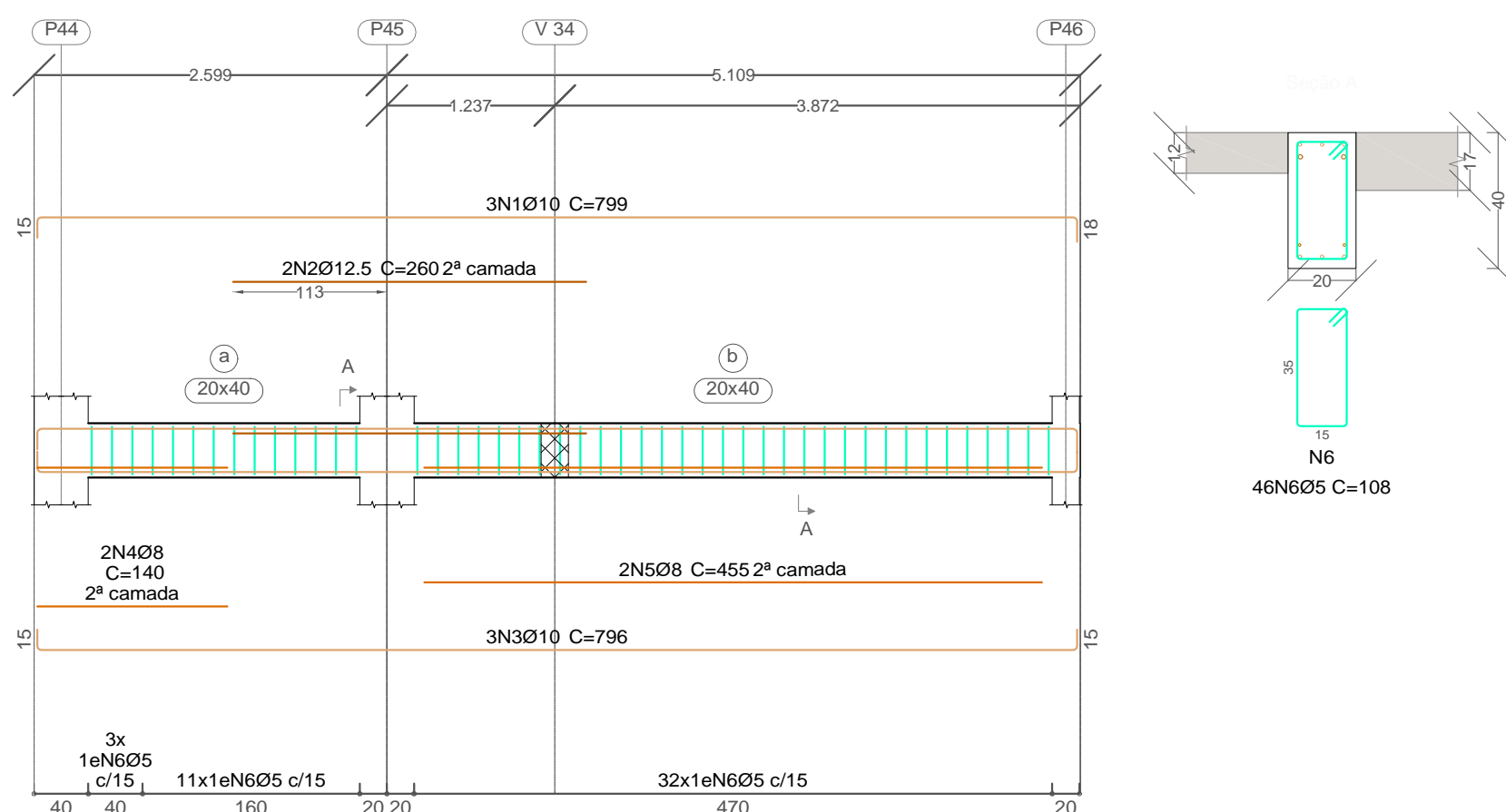
V 9
Escala vigas 1:50
Escala seções 1:20



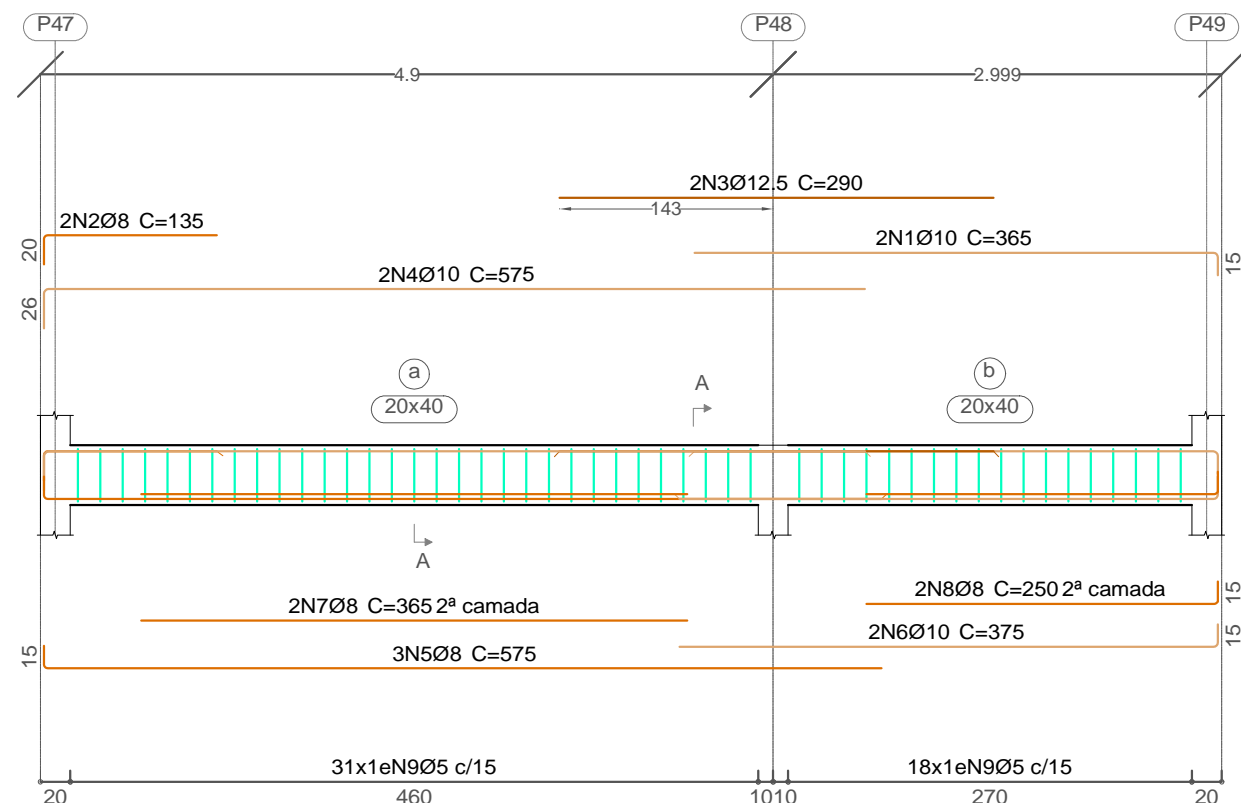
V 10
Escala vigas 1:50
Escala seções 1:20



V 11
Escala vigas 1:50
Escala seções 1:20



V 12
Escala vigas 1:50
Escala seções 1:20



Elemento	Pos.	Diam.	Q.	Dob. (cm)	Reta (cm)	Dob. (cm)	Comp. (cm)	Total (cm)	CA-50 (kg)	CA-60 (kg)
V 1	1	Ø8	3	15	824.8	15	855	2565	10.1	
	2	Ø12.5	4	16.3	188.8	15	205	820	7.9	
	3	Ø10	3	15	824.8	15	855	2565	15.8	
	4	Ø8	2		695		695	1390	5.5	
	5	Ø5	66	5	98	5	108	7128		11.2
Total+10%:									43.2	12.3
V 4	1	Ø12.5	4	16.3	543.8		560	2240	21.6	
	2	Ø10	2		355	15	370	740	4.6	
	3	Ø12.5	2	16.3	318.8		335	670	6.5	
	4	Ø10	2		400	15	415	830	5.1	
	5	Ø10	3	15	515.4		530	1590	9.8	
	6	Ø10	3		365	15	380	1140	7.0	
	7	Ø12.5	2		400		400	800	7.7	
	8	Ø5	51	5	98	5	108	5508		8.6
Total+10%:									68.5	9.5
V 5	1	Ø8	3	15	325		340	1020	4.0	
	2	Ø8	3		815		815	2445	9.7	
	3	Ø10	3		330	15	345	1035	6.4	
	4	Ø10	2		260		260	520	3.2	
	5	Ø10	2		230		230	460	2.8	
	6	Ø10	2		285		285	570	3.5	
	7	Ø10	3	15	300		315	945	5.8	
	8	Ø10	3		325	15	340	1020	6.3	
	9	Ø6.3	1	15	170		185	185	0.5	
	10	Ø6.3	2		300		300	600	1.5	
	11	Ø6.3	2		245		245	490	1.2	
	12	Ø6.3	2		90	15	105	210	0.5	
	13	Ø10	3		815		815	2445	15.1	
	14	Ø5	82	5	98	5	108	8856		13.9
Total+10%:									66.6	15.3
V 7	1	Ø10	3	15	305.1	15	335	1005	6.2	
	2	Ø10	1	15	145		160	160	1.0	
	3	Ø8	3	15	305.1	15	335	1005	4.0	
	4	Ø5	17	5	98	5	108	1836		2.9
Total+10%:									12.3	3.2
V 9	1	Ø10	3		565.6	19.4	585	1755	10.8	
	2	Ø12.5	2		220		220	440	4.2	
	3	Ø10	3	15	305		320	960	5.9	
	4	Ø8	3	15	275.1		290	870	3.4	
	5	Ø8	3		525.6	15	541	1623	6.4	
	6	Ø10	2	15	90		105	210	1.3	
	7	Ø12.5	2		455		455	910	8.8	
	8	Ø5	47	5	98	5	108	5076		8.0
Total+10%:									44.9	8.8
V 10	1	Ø10	2	16.8	495		512	1024	6.3	
	2	Ø10	2		305	15	320	640	3.9	
	3	Ø8	1	15	80		95	95	0.4	
	4	Ø12.5	2		260		260	520	5.0	
	5	Ø8	2		115	15	130	260	1.0	
	6	Ø10	3	15	505		520	1560	9.6	
	7	Ø10	3		325	15	340	1020	6.3	
	8	Ø8	2		275		275	550	2.2	
	9	Ø8	2		160		160	320	1.3	
	10	Ø5	47	5	98	5	108	5076		8.0
Total+10%:									39.6	8.8
V 11	1	Ø10	3	15	765.8	18	799	2397	14.8	
	2	Ø12.5	2		260		260	520	5.0	
	3	Ø10	3	15	765.8	15	796	2388	14.7	
	4	Ø8	2		140		140	280	1.1	
	5	Ø8	2		455		455	910	3.6	
	6	Ø5	46	5	98	5	108	4968		7.8
Total+10%:									43.1	8.6
V 12	1	Ø10	2		350	15	365	730	4.5	
	2	Ø8	2	19.6	115.4		135	270	1.1	
	3	Ø12.5	2		290		290	580	5.6	
	4	Ø10	2	26.2	548.8		575	1150	7.1	
	5	Ø8	3	15	560		575	1725	6.8	
	6	Ø10	2		360	15	375	750	4.6	
	7	Ø8	2		365		365	730	2.9	
	8	Ø8	2		235	15	250	500	2.0	
	9	Ø5	49	5	98	5	108	5292		8.3
Total+10%:									38.1	9.1
									Ø5:	0.0
									Ø6.3:	4.1
									Ø8:	72.1
									Ø10:	200.5
									Ø12.5:	79.6
									Total:	356.3
										75.6

COBRIMENTOS MÍNIMOS

LAJE E ESCADA: 2,5cm
PILAR: 2,5cm
PILAR (CONTATO COM O SOLO): 2,5cm

SAPATA: 4cm

VIGA: 2,5cm

CONCRETO

fck = 30 MPa

AÇO: CA-50 E CA-60



PREFEITURA MUNICIPAL
SANTO ANTÔNIO DE LEVERGER

VIGAS

V 1 V 4 V 5 V 7 V 9
V 10 V 11 V 12

(RESP. TÉCNICO)

(PROPRIETÁRIO)

Maycon Henrique Moraes Rodrigues
CREA - MT: 51648

Prefeitura Municipal de Santo Antônio de Leverger
CNPJ: 03.507.555/0001-12

09

09 - 31